



50W RF Beauty Equipment With 4MHz Frequency / 1-18Hz Shockwave

Our Product Introduction

For more products please visit us on hifubeauty-machine.com

Basic Information

- Place of Origin: China Guangzhou
- Brand Name: HM
- Certification: CE
- Model Number: SP-9
- Minimum Order Quantity: 1
- Price: confer
- Packaging Details: Standard export packing
- Delivery Time: 5-8days
- Payment Terms: L/C, D/A, D/P, T/T, Western Union, MoneyGram
- Supply Ability: 1000 Piece/Pieces per Month



Product Specification

- Name: RF Beauty Equipment
- Frequency: 4MHZ
- Target Area: Body/Face/Legs/Arms
- Language: Multi-language
- Shockwave Frequency: 1-18Hz
- Rf Applicator: Bipolar
- Delay Interval: 0-3s
- Rf Power: 50W
- Suitable For: Beauty Clinic/centre/salon/home Use
- Highlight: **50W RF Beauty Equipment,**
RF Beauty Equipment 4MHz,
CE RF Radio Frequency Beauty Equipment



More Images



Product Description

Multi Frequency RF Beauty Equipment With 4MHz Frequency And 1-18Hz Shockwave

Product Description:

Equipped with laser, E-light, and IPL machine technologies, this device is perfect for a wide range of skin treatments. Its delay interval of 0-3 seconds ensures that treatments are comfortable and safe for your skin.

With five treatment tips to choose from (F-S, F-M, F-L, I-M, and I-L), this RF beauty equipment is versatile and can be customized to meet your unique beauty needs. Whether you're looking to reduce wrinkles, tighten sagging skin, or improve your overall complexion, this device has got you covered.

Additionally, this RF beauty equipment is multi-language, meaning you can easily navigate and operate it in your preferred language. This feature makes it an accessible and user-friendly option for beauty professionals and enthusiasts alike.

In summary, the RF Beauty Equipment is the ultimate face beauty equipment that combines advanced technology and customizable treatments for an effective and safe beauty experience. Whether you're a beauty professional or enthusiast, this device is a must-have for achieving your desired beauty goals.

Features:

Product Name: RF Beauty Equipment

Rf Power: 50W

Suitable For: Beauty Clinic/centre/salon/home Use

Rf Applicator: Bipolar

Target Area: Body/Face/Legs/Arms

Delay Interval: 0-3s

This Home Beauty Machine is perfect for use in a Beauty Clinic, centre, salon, or even at home. With 50W of power and a Bipolar Rf Applicator, it can target a variety of areas on the body, face, legs, and arms. Plus, the Delay Interval can be adjusted from 0-3s for optimal results. The RF Beauty Equipment is a must-have for anyone looking to improve their skin's appearance and feel.

Looking for other beauty equipment? Check out our selection of Industrial Microwave Equipment and Elight Rf Laser Machine.

Technical Parameters:

Language:	Multi-language
Screen:	Big Color Touch Screen
Rf Power:	50W
Target Area:	Body/Face/Legs/Arms
Action:	IC Equipment
Frequency:	4MHZ
Rf Polar:	Monopolar
Treatment Tips:	5pcs(F-S/F-M/F-L/I-M/I-L)
Shockwave Frequency:	1-18Hz
Colors:	White

Applications:

One of the significant attributes of RF Beauty Equipment is its ability to improve skin quality. This product is designed to penetrate deep into the skin to stimulate collagen production and tighten sagging skin, making it an ideal industrial microwave equipment for medical and cosmetic clinics. It is also effective in reducing wrinkles, fine lines, and other signs of aging, which is beneficial for individuals who want to maintain youthful skin.

RF Beauty Equipment is not only limited to commercial use but is also suitable for home use. This home use beauty device is convenient and easy to use with its simple and user-friendly interface. It is perfect for individuals who prefer to have a self-care routine at home. The device can be used to treat various skin concerns such as acne, dark circles, and pigmentation. It is a perfect solution for people who want to achieve healthy and glowing skin without having to visit a beauty clinic.

RF Beauty Equipment is also an excellent addition to IPL Laser Beauty Machines. It can be used before or after an IPL treatment to enhance its benefits. RF Beauty Equipment will improve the effectiveness of IPL treatments, making it a perfect combination for individuals who want to have a complete beauty treatment.

In conclusion, RF Beauty Equipment is a versatile and effective device that has a wide range of applications. It can be used in medical and cosmetic clinics, at home, and in conjunction with other beauty machines. The device's monopolar radiofrequency technology, 50W power, and 1-18Hz shockwave frequency make it an effective and reliable product that will provide its users with the best results.

Customization:

- Place of Origin: China Guangzhou
- Language: Multi-language
- Action: IC Equipment
- Colors: White
- Voltage: 110V/220V10% 60HZ 10A
- Frequency: 4MHZ

We also provide customization services for IPL Laser Beauty Machine and IPL Laser Beauty Machine.

FAQ:

What is RF Beauty Equipment?

RF Beauty Equipment is a device that uses radiofrequency technology to tighten and rejuvenate the skin.

Where is the RF Beauty Equipment made?

The RF Beauty Equipment is made in China Guangzhou.

Who can use RF Beauty Equipment?

RF Beauty Equipment is safe for all skin types and can be used by anyone who wants to improve the appearance of their skin.

How often should I use RF Beauty Equipment?

You can use RF Beauty Equipment once or twice a week, depending on your skin's needs.

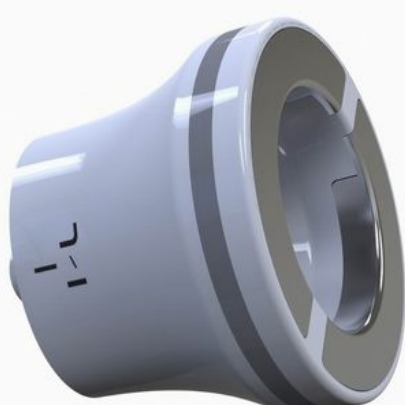
Is RF Beauty Equipment painful?

No, RF Beauty Equipment is not painful. You may feel a slight warming sensation on your skin, but it should not be uncomfortable.











Guangzhou Lizhirun Technology Development Co., Ltd



18688905627



cenglinlin25@gmail.com



hifubeauty-machine.com

Room 502, 5th Floor, Building F, Huixin Industrial Zone, No. 89, Hetai Road, Hebian Village, Baiyun District,
Guangzhou